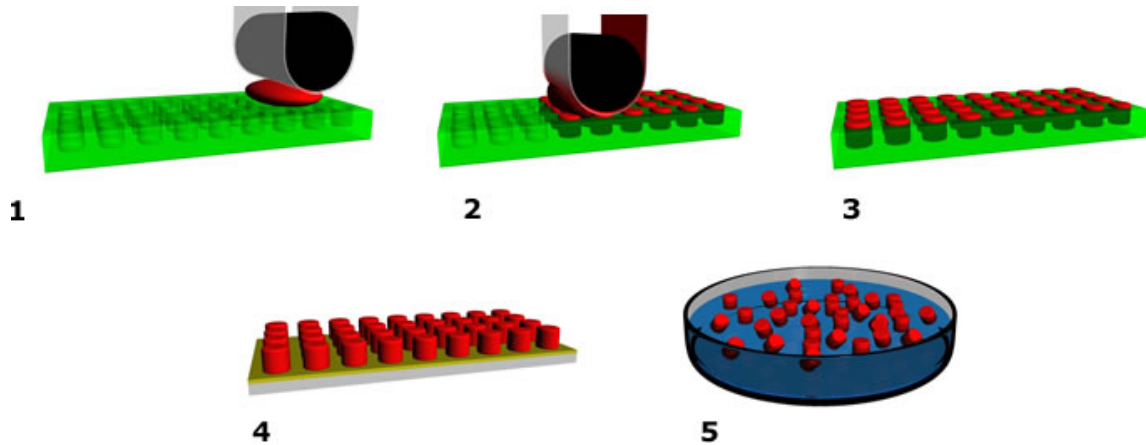


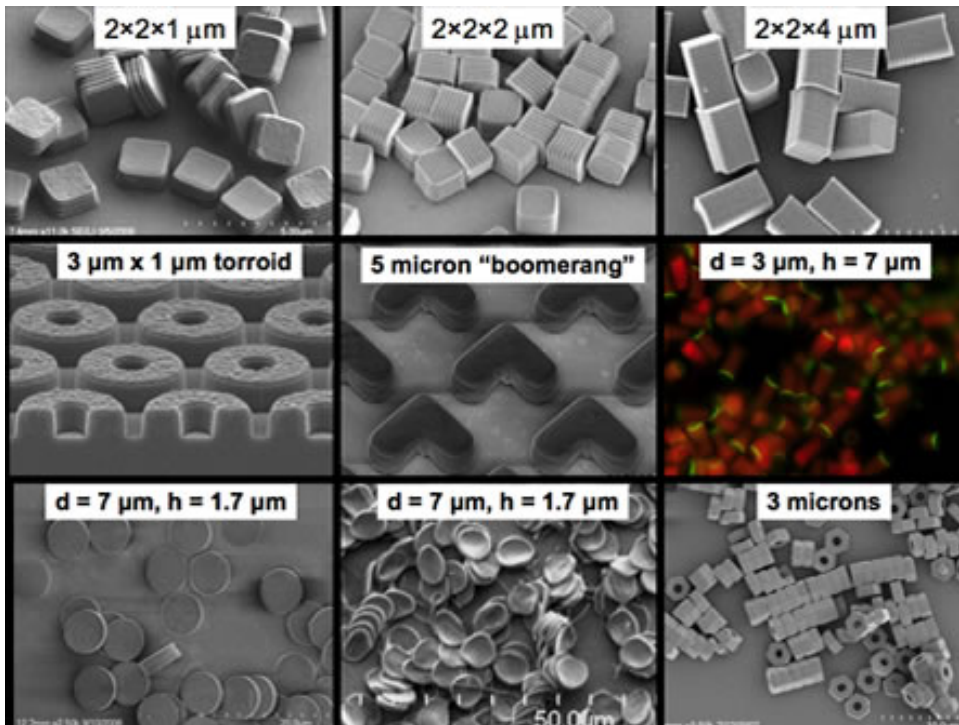
PRINT



The PRINT Process

Particle Replication in Non-wetting Templates (PRINT) utilizes the unique characteristics of perfluoropolyether (PFPE) to fabricate monodisperse, shape and size specific particles ranging from the nanometer to micrometer size regime. In step 1-2 (above), a liquid (red) is evenly distributed over the PFPE mold (green) using a roller. In step 3, the liquid is solidified by a variety of methods (photochemically or thermally cured, lyophilized, frozen, etc...) In step 4, the particles are harvested from the mold using a sacrificial adhesive layer. In step 5, the particles are collected in solution after dissolving the sacrificial adhesive.

Micron-sized Particles



Nanometer-sized Particles

